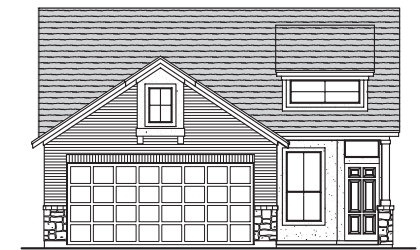
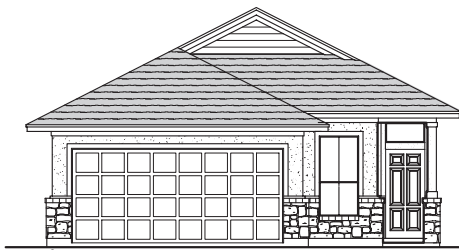
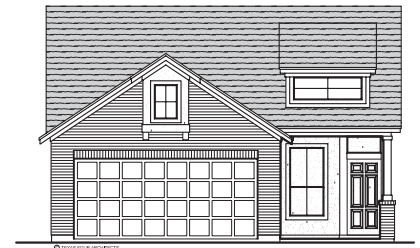
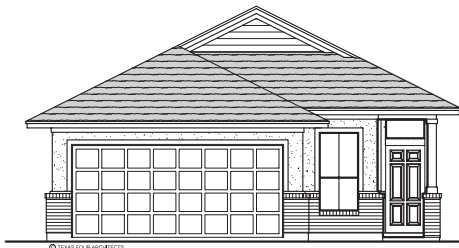
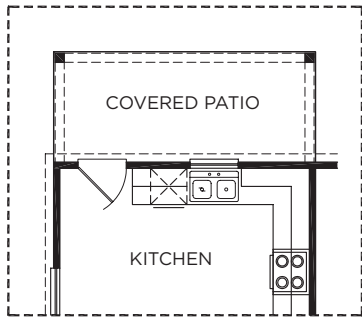
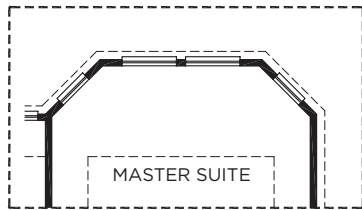


The Camden

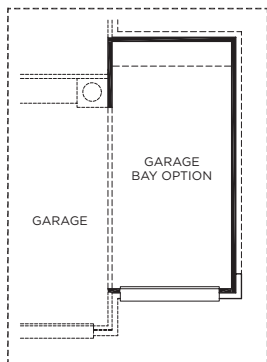




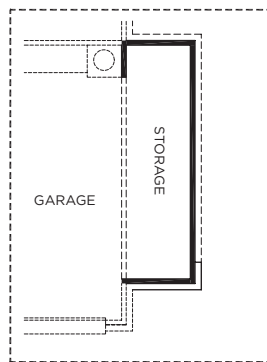
OPTIONAL COVERED PATIO



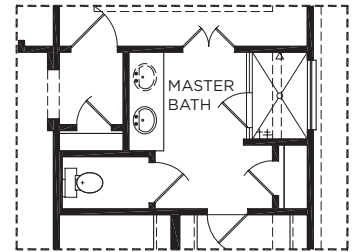
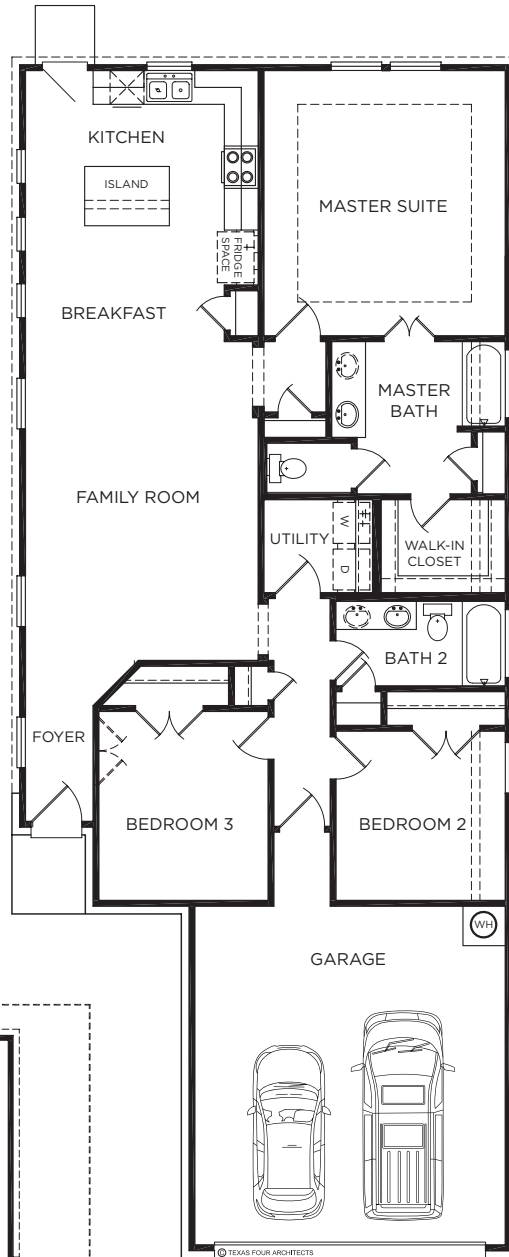
MASTER BAY OPTION



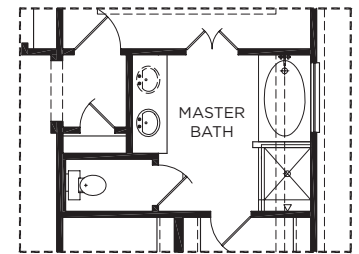
GARAGE BAY OPTION



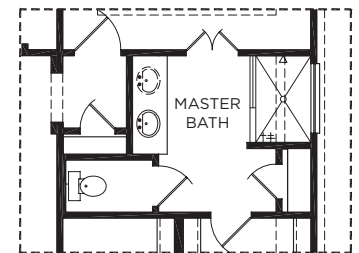
5 FT GARAGE
STORAGE OPTION



OPTIONAL MASTER BATH I



OPTIONAL MASTER BATH II



SPA SHOWER OPTION

The Camden

Approximate Square Footage: 1415

3 Bedrooms / 2 Baths

Optional Covered Patio

Optional Master Bay Window

08/2022



All information (including, but not limited to, prices, availability, incentives, floor plans, site plans, features, standards and options, assessments, and fees, planned amenities, programs, conceptual artists' renderings and community development plans) is not guaranteed and remains subject to change or delay without notice. Maps and plans are not to scale and all dimensions are approximate. Please see a Liberty Home Builders Sales Associate for details and visit www.libertyhomebuilders.com for additional disclaimers.

